

MLS#: 3722948

Circa 1935 bungalow has a cathedral-height front porch with beautiful tongue-and-groove ceiling.



The property includes a light-filled 1BR/1BA apartment over a 2-car detached garage.



The lot is double-deep, offering a spacious back yard or the future construction of a larger home on the lot.



This 1935 bungalow features original millwork, plus other architectural touches of the period like this living room coal-burning fireplace (one of two in the home).



French doors separate the light-filled living room and dining room.



The separate dining room is roomy enough for a formal dining room table seating 8+, plus other furniture if desired.



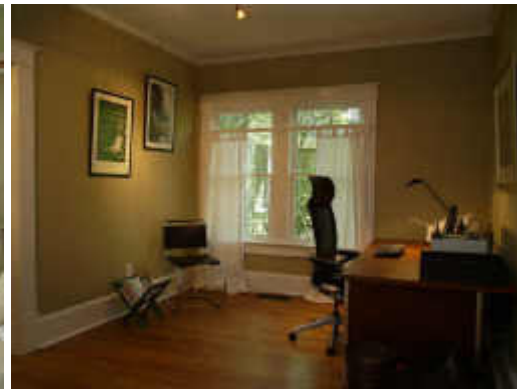
The eat-in kitchen is spacious and offers generous cabinet space, especially compared to most houses of this vintage. The cabinets are clear-finished solid maple.



The master bedroom has his & her closets, one of which is cedar-lined, plus a remodeled en suite bathroom. A pocket door separates the bath and WC from the lavatory.



The front bedroom, with an en suite roommate configuration, has two walls of windows and looks out onto the front porch.



The home features original heart pine floors, as shown here in this den which is currently being used as an office.



The screened-in back porch offers a comfortable outdoor dining alternative.



This renovated 1BR/1BA apartment over the detached garage features brand new hardwood floors and bathroom fixtures, an Ikea kitchen, a walk-in closet, full-sized W/D, and its own sun porch and patio area.

© 2002-2008 First Multiple Listing Service, Inc. **Support:**support@fmls.com Phone: 404-255-4219 or 1-800-505-FMLS